

Measurement report

Jüri Jaanson Kahe Silla jook

10 km

Karen Aau
WA - AIMS B grade measurer
August 2025

GENERAL INFORMATION

Name of measurer: Karen Aau, B grade measurer

Address: Karikakra tee 21-3, Harku, Estonia

Phone: +37253416303

E-mail: aau.karen@gmail.com

Name of event: Jüri Jaasoni Kahe Silla jook

Location: Pärnu, Estonia

Race date: 07.09.2025

Distance: 10 km

Advertised race distance: not less than 10 000 m

Race contact person: Vahur Mäe

Phone: +372 5660 8532

E-mail: vahur@2silda.ee

Type of course: flat, out & back

Race surface: asphalt

Separation: 0%

Altitude:

Start – 3,5 m, Finish 3,5 m

Highest point – 12 m, Lowest point – 1 m

Difference in elevation highest > lowest point – 11 m

Measurement details

Section of road available: entire width of road, except Papiniidu bridge (left side pavement) and Raba bridge (right side pavement)

Line to be taken at turns: shortest possible route

DETAIL OF THE CALIBRATION COURSE

Date: 26.08.2025

Location of calibration course: pavement in front of Viiking SPA at Sadama St

Measure method: steel taped

Number of measurements: 2

Markers: nails

Start time: 17.45

Finish time: 18.30

Temperature: *Start* +14°C, *Finish* +14°C, *Average* +14°C

MEASUREMENTS AND CALCULATIONS:

1 First measurement.

4	x	49,9 m	+	0,4 m	=	200 m
# tape lengths		distance per tape length		partial tape length		Measured distance

2 Second measurement.

4	x	49,9 m	+	0,41 m	=	200,01 m
# tape lengths		distance per tape length		partial tape length		Measured distance

3 Average raw (uncorrected) measurement of course: 250,005 m

4 Temperature correction.

$$\text{Correction factor} = 1 + (0.0000116 \times [14 - 20]) = 0,9999304$$

5 Multiply the temperature correction factor by the average raw measurement of the course

0,9999304	x	250,005	=	249,9876 m
correction factor		avg. raw measurement		corrected measurement

6 Final (adjusted) length of calibration course: 200 m

$$= 249,9876 \text{ m} + 0,012 \text{ m} = 250 \text{ m}$$

Summary: To get 200 m length calibration course, added 1,2 cm with steel tape.

BICYCLE CALIBRATION DATA SHEET

PRE-CALIBRATION:

Day: 26.08.2025

Time: 18.50

Temperature: +14°C

Start count	Finish count	Difference
606507	608705	2198
608705	610903	2198
610903	613101	2198
613101	615299	2198

Pre-measurement average count = $(2198+2198+2198+2198) / 4 = 2198$

Counts per km = $2198 \times 1000 / 200 = 10990$

Working Constant = $10990 \times 1,001 / 1000 = 11,00099 \text{ c/m}$

POST-CALIBRATION:

Day: 26.08.2025

Time: 20.46

Temperature: +13°C

Start count	Finish count	Difference
751931	754131	2200
754131	756330	2199
756330	758530	2200
758530	760729	2199

Post-measurement average count = $(2200+2199+2200+2199) / 4 = 2199,5$

Counts per km = $2199,5 \times 1000 / 200 = 10997,5$

Working Constant = $10997,5 \times 1,001 / 1000 = 11,0084975 \text{ c/m}$

CONSTANT FOR THE DAY = $(11,00099+11,0084975) / 2 = 11,0047438 \text{ c/m}$

COURSE MEASUREMENT DATA SHEET

reading	counts	distance	adj.dist	location
<i>Measured in reverse of running direction, 26.08.2025, c=11,0047438 c/m</i>				
<i>--- adjustment here with steel tape adds 1,15 m ---</i>				
634520	0	0,0 m	0,0 m	START - at Akadeemia St (detailed sketch attached)
635765	1245	113,1 m	114,3 m	P1 – lh 2nd bridge railing post after lamppost (river side)
<i>Measured in running direction, 26.08.2025, c=11,0047438 c/m</i>				
638656	0	113,1 m	114,3 m	P1 – lh 2nd bridge railing post after lamppost (river side)
641681	3025	388 m	389,2 m	P2 – rh 5th bridge railing post from Suur-Jõekalda St
650772	9091	1214,1 m	1215,3 m	P3 – concrete wall before bridge railing
662450	11678	2275,3 m	2276,5m	P4 – wooden lamp post left hand after turn to Väike-Joe St
692139	29689	4973,1 m	4974,3 m	P5 – 1st bridge railing post left hand
732277	40138	8620,4 m	8621,6 m	P3 – concrete wall before bridge railing
742136	9859	9516,3 m	9517,5 m	P6 – the last curved lamppost before the curve straightens out
<i>Measured in running direction, 26.08.2025, c=11,0047438 c/m</i>				
<i>--- adjustment here with steel tape adds 1,15 m ---</i>				
628009	0	9516,3 m	9517,5 m	P6 – the last curved lamppost before the curve straightens out
633307	5298	9997,7	10000 m	START - at Akadeemia St (detailed sketch attached)

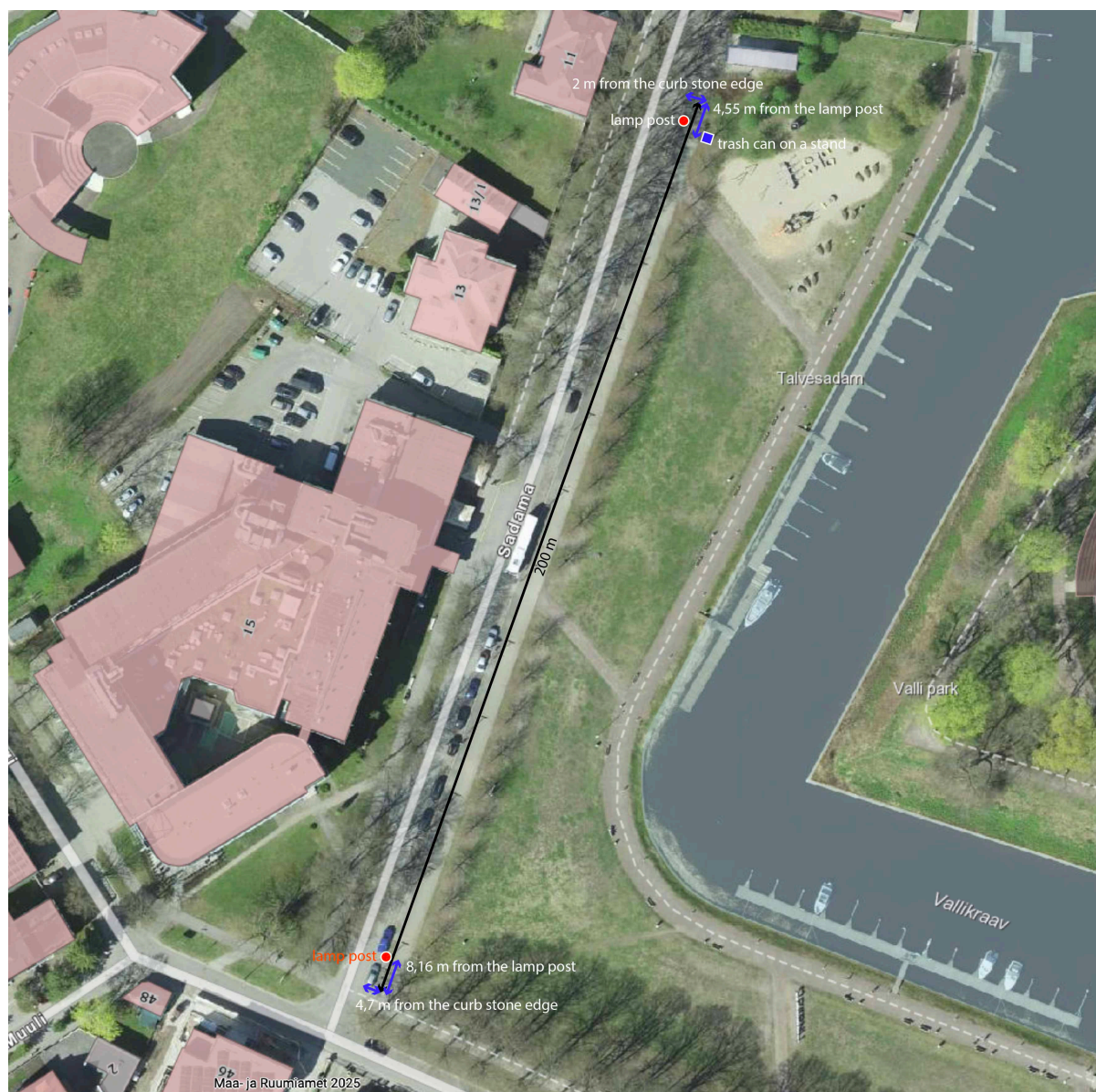
Note any adjustments made to the course after measurement:

Adjustment made between START – P1 and P6 – START. Moved start/finish line 1,15m to get the missing 2,3m.

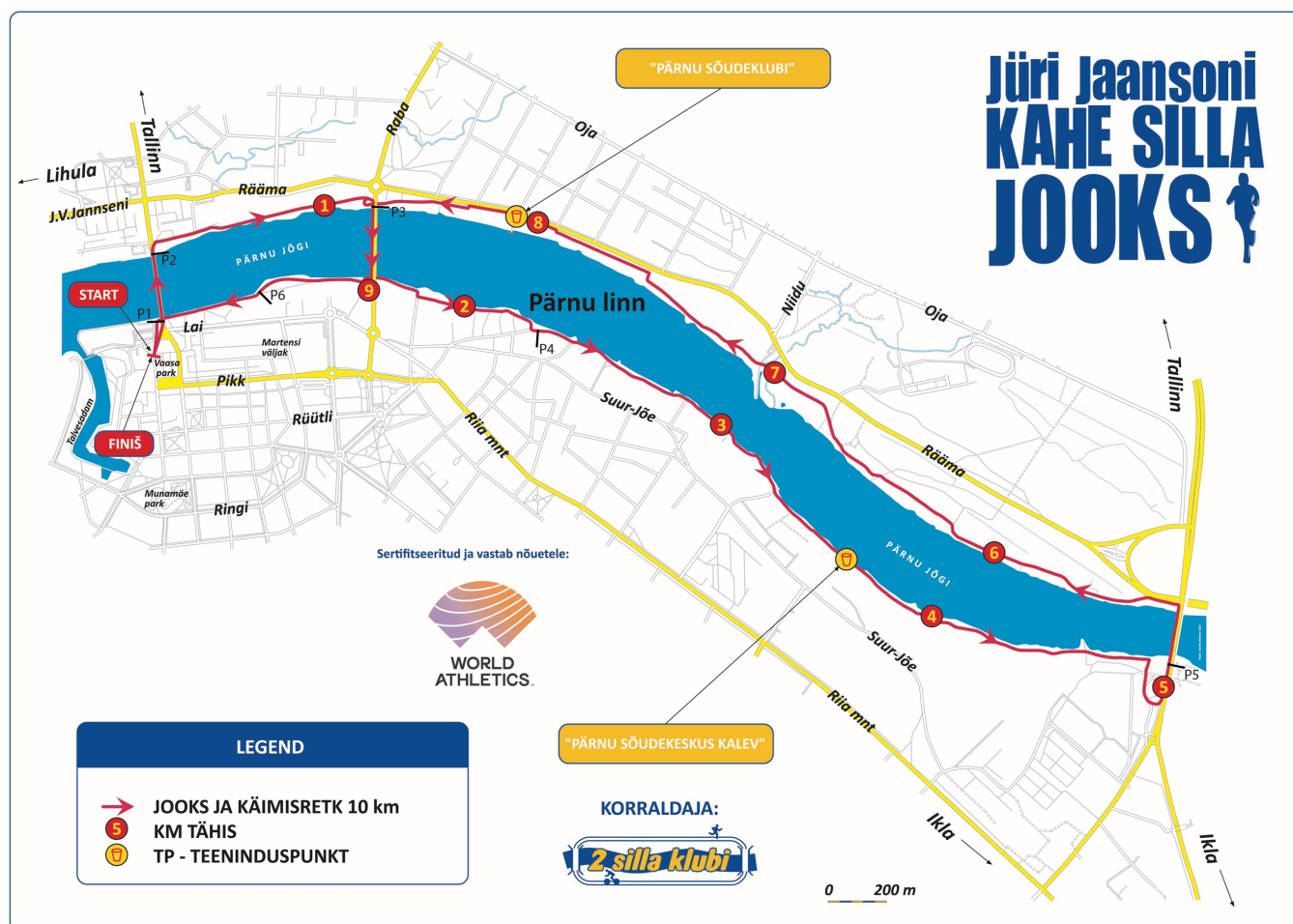
Notes:

lh = left hand
 rh = right hand
 lp = lamp post
 pc = pedestrian crossing

CALIBRATION COURSE



COURSE



START / FINISH LINE

