

## Measurement report

# **Rapla Selveri Suurjooks**

10 km

Karen Aau  
WA - AIMS B grade measurer  
May 2025

## GENERAL INFORMATION

**Name of measurer:** Karen Aau, B grade measurer

**Address:** Karikakra tee 21-3, Harku, Estonia

**Phone:** +37253416303

**E-mail:** aau.karen@gmail.com

**Name of event:** Rapla Selveri Suurjooks

**Location:** Rapla, Estonia

**Race date:** 24.05.2025

**Distance:** 10 km

**Advertised race distance:** not less than 10 000 m

**Race contact person:** Donatas Narmont

**Phone:** +3725045203

**E-mail:** donatas@tennis.ee

### Description of the course

**Type of course:** flat, out & back

**Race surface:** asphalt

**Separation:** 0%

**Altitude:**

Start – 62 m, Finish 62 m

Highest point – 75 m, Lowest point – 58 m

Difference in elevation highest > lowest point – 17 m

### Measurement details

**Section of road available:** entire width of road

**Line to be taken at turns:** shortest possible route

## DETAIL OF THE CALIBRATION COURSE

**Date:** 01.05.2025

**Location of calibration course:** Pargi street

**Measure method:** steel taped

**Number of measurements:** 2

**Markers:** nails

**Start time:** 16:00

**Finish time:** 16:45

**Temperature:** *Start* +11°C, *Finish* +11°C, *Average* +11°C

### MEASUREMENTS AND CALCULATIONS:

1 First measurement.

$$\frac{5}{\text{\# tape lengths}} \times \frac{49,9 \text{ m}}{\text{distance per tape length}} + \frac{0,5 \text{ m}}{\text{partial tape length}} = \frac{250 \text{ m}}{\text{measured distance}}$$

2 Second measurement.

$$\frac{5}{\text{\# tape lengths}} \times \frac{49,9 \text{ m}}{\text{distance per tape length}} + \frac{0,498 \text{ m}}{\text{partial tape length}} = \frac{249,998 \text{ m}}{\text{measured distance}}$$

3 Average raw (uncorrected) measurement of course 249,999 m

4 Temperature correction.

$$\text{Correction factor} = 1 + (0.0000116 \times [11 - 20]) = 0,9998956$$

5 Multiply the temperature correction factor by the average raw measurement of the course

$$\frac{0,9998956}{\text{correction factor}} \times \frac{249,999 \text{ m}}{\text{avg. raw measurement}} = \frac{249,9729001 \text{ m}}{\text{corrected measurement}}$$

6 Final (adjusted) length of calibration course: **250 m**

$$\underline{249,9729001 \text{ m} + 0,0270999 \text{ m} = 300\text{m}}$$

**Summary:** To get 250 m length calibration course, added 2,7 cm with steel tape.

## BICYCLE CALIBRATION DATA SHEET

### PRE-CALIBRATION:

**Day:** 01.05.2025

**Time:** 18.00

**Temperature:** +11°C

Start count	Finish count	Difference
225364	228110	2746
228110	230855	2745
230855	233601	2746
233601	236346	2745

Pre-measurement average count =  $(2746+2745+2746+2745) / 4 = 2745,5$

Counts per km =  $2745,5 \times 1000 / 250 = 10982$

**Working Constant** =  $10982 \times 1,001 / 1000 = 10,992982 \text{ c/m}$

### POST-CALIBRATION:

**Day:** 01.05.2025

**Time:** 19.30

**Temperature:** +11°C

Start count	Finish count	Difference
346732	349478	2746
349478	352223	2745
352223	354969	2746
354969	357714	2745

Pre-measurement average count =  $(2746+2745+2746+2745) / 4 = 2745,5$

Counts per km =  $2745,5 \times 1000 / 250 = 10982$

**Working Constant** =  $10982 \times 1,001 / 1000 = 10,992982 \text{ c/m}$

**CONSTANT FOR THE DAY** =  $(10,992982+10,992982) / 2 = 10,992982 \text{ c/m}$



## COURSE MEASUREMENT DATA SHEET

reading	counts	distance	adj.dist	location
<i>Measured in running direction, 01.05.2025, c=10,992982 c/m</i>				
<i>--- adjustment here with steel tape adds 14,3 m ---</i>				
236985	0	0.0m		START - at Kagu street (detailed sketch attached)
259768	0	2072,5 m	2086,8 m	P1 – bus stop sign post right hand after turn from Viljandi mnt
281153	0	4017,8 m	4032,1 m	P2 – road sign post “Tuti” right hand after turn from Rapla-Järvakandi-Kergu tee
325806	0	8079,8 m	8094,1 m	P3 – end of lane sign post after turn from road nr 20125
<i>--- adjustment here with steel tape adds 14,3 m ---</i>				
<b>346600</b>	<b>109614</b>	<b>9971,4 m</b>	<b>10000 m</b>	FINISH - at Kagu street (detailed sketch attached)

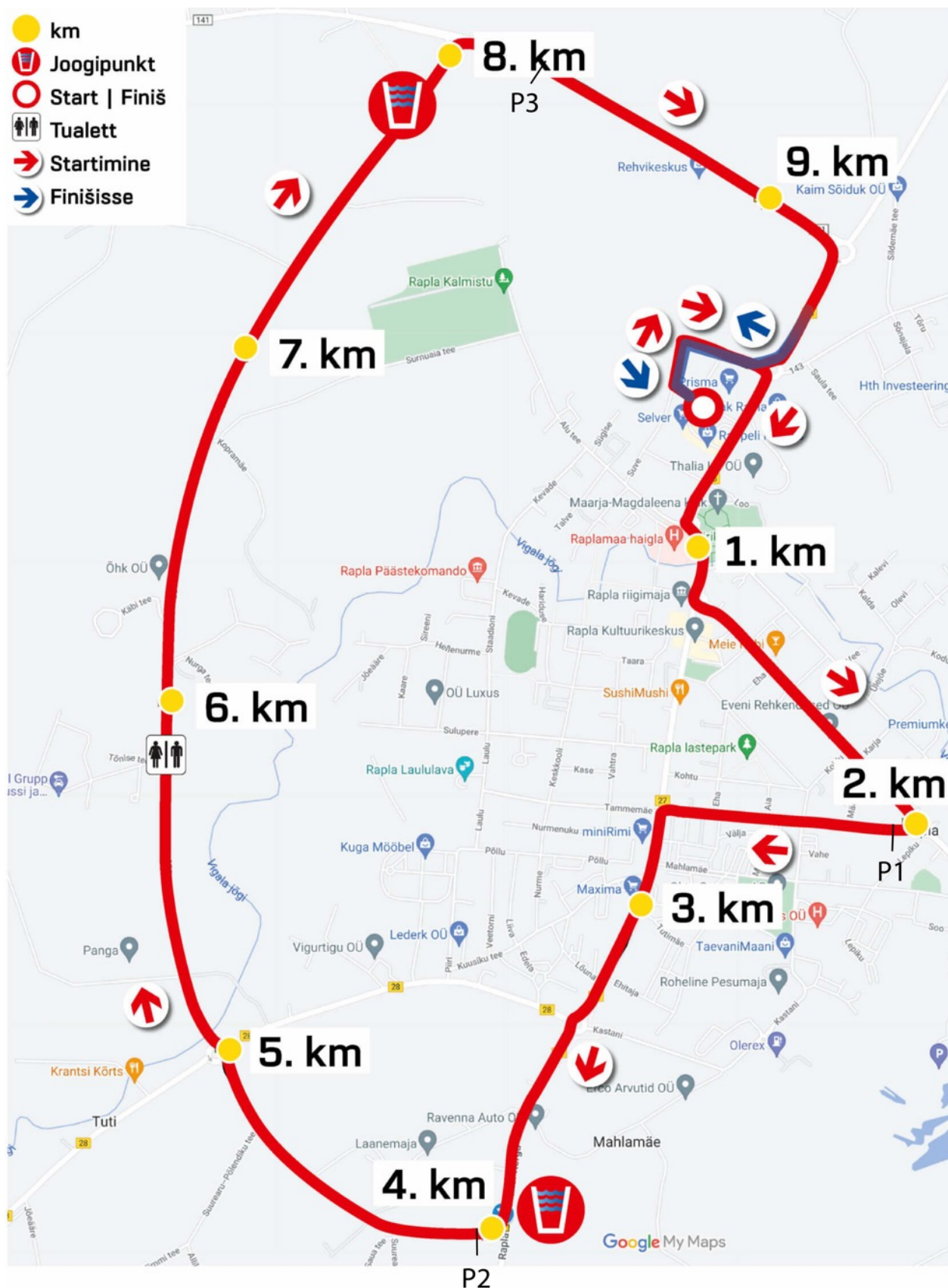
### Note any adjustments made to the course after measurement:

As start and finish line is same, after measurement with bike i moved start/finish line with steel tape 14,3m. Summary added 28,6m.

## CALIBRATION COURSE

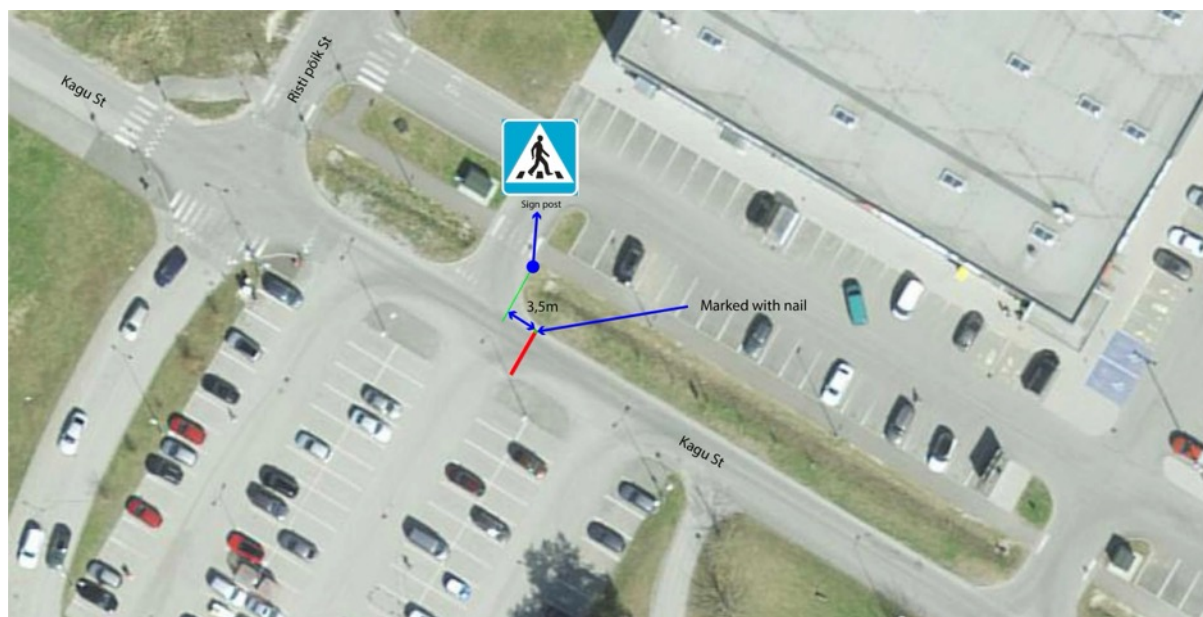


## COURSE

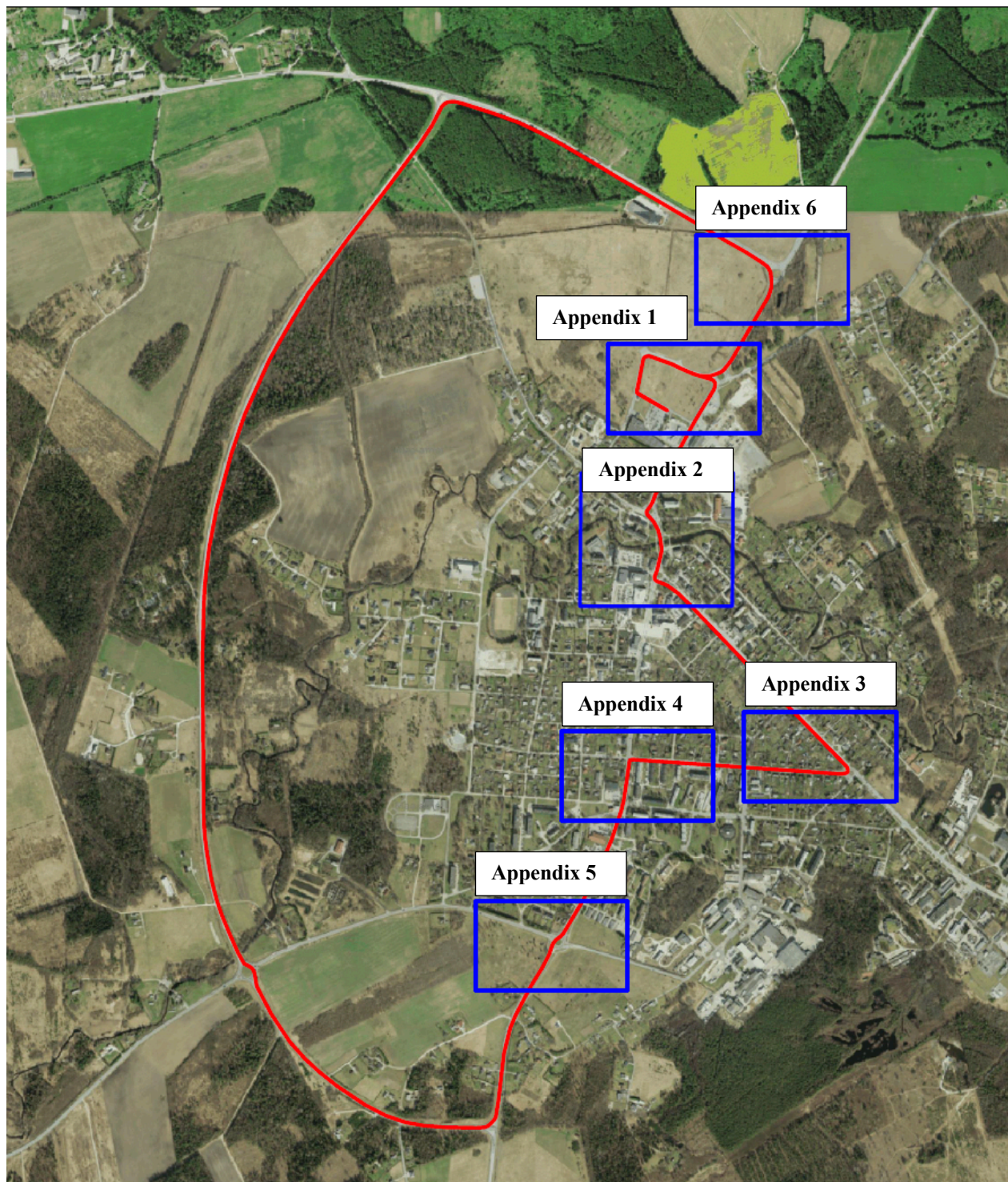




## START / FINISH LINE



## APPENDIXS





## APPENDIX 1



## APPENDIX 2

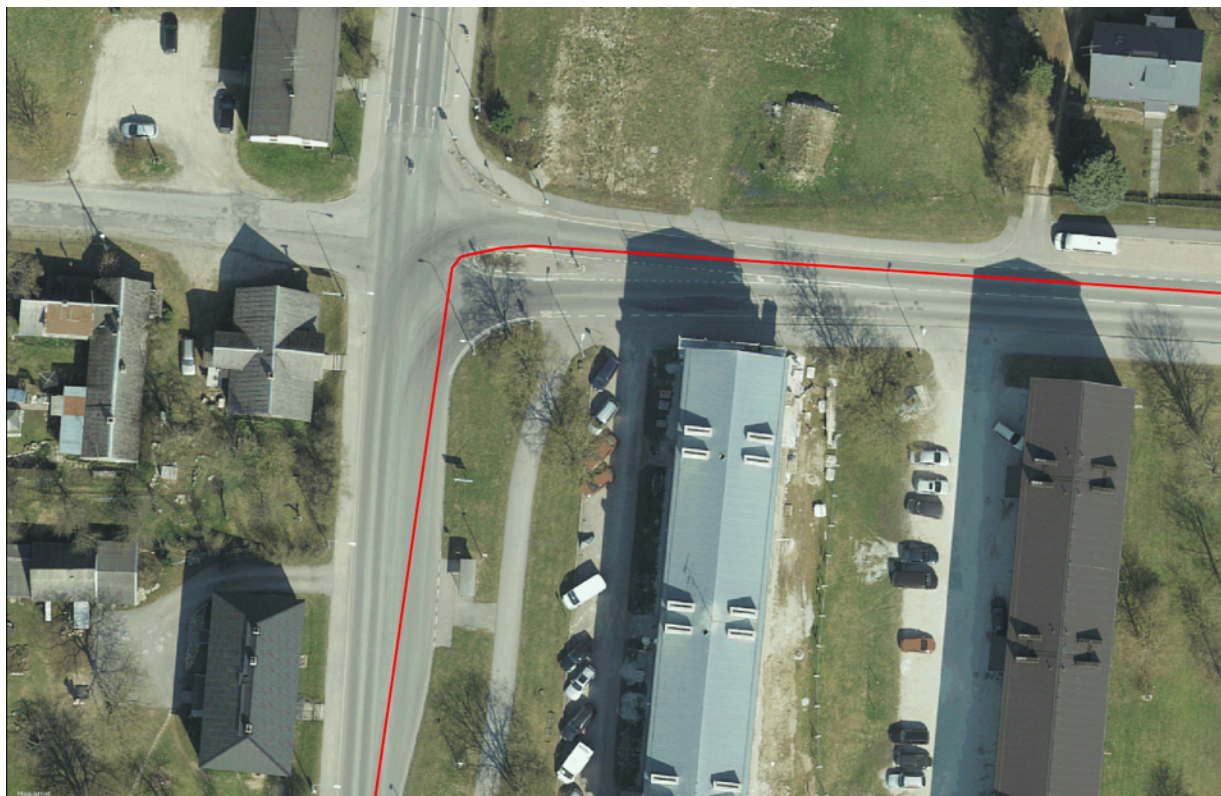




### APPENDIX 3



### APPENDIX 4





## APPENDIX 5



## APPENDIX 6

